

**NOW
AVAILABLE**

From

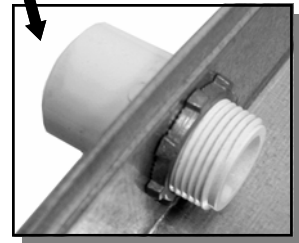


GALVANIZED DRAIN PANS

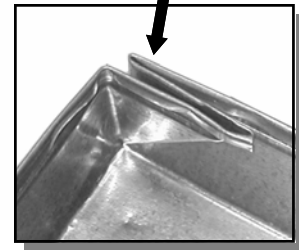
302



PVC DRAIN FITTING



FOLDED CORNERS



FEATURES:

- ◆ Hemmed & Rigid Edge
- ◆ Seamless Folded Corners
- ◆ No Sealant Required
- ◆ 3/4" PVC Drain Fitting
- ◆ 26 Gauge Galvanized Steel

ORDERING INFORMATION:

- ◆ All Sizes Available
- ◆ Specify drain location when ordering

PRICING:

- ◆ Priced by girth:
(2X length + 2X width) X Girth price
- ◆ For example:
30" X 60" Pan: 60"+120" =180" X Girth price
- ◆ Contact your customer service rep for list prices

SNAPPY		ACME		ALCO	
Detroit Lakes, MN	800-328-2044	Philadelphia, PA	800-899-2850		
Northglenn, CO	800-552-4582	Medina, NY	800-229-0021	Powder Springs, GA	800-888-4391
Milwaukie, OR	800-300-1660	Bartonville, IL	800-447-1674	Hattiesburg, MS	800-477-2526